

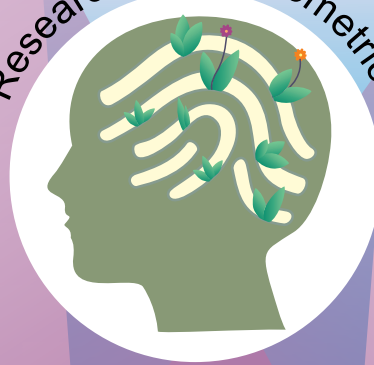
Jñāna Prabodhinī Saṁśhodhan Saṁsthā (JPSS)



Jñāna Prabodhinī's
Institute of Psychology

**IDENTIFYING AND NURTURING
INTELLIGENCE FOR SOCIAL CHANGE**

Research & Psychometrics



Individual Counseling



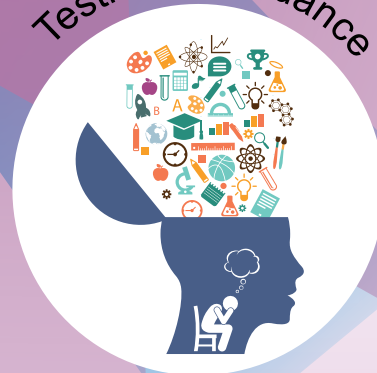
Academics



Ability Development



Testing & Guidance



Jñāna Prabodhinī Bhavan

510, Sadashiv Peth, Pune, Maharashtra 411030.

Email : jpip@jnanaprabodhini.org

Ph : 020 24207142

www.jpip.org

INTRODUCTION :

Jñāna Prabodhinī Saṁshodhan Saṁsthā is registered as Research Society. Jñāna Prabodhinī's Institute of Psychology (JPIP) is a part of Jñāna Prabodhinī Saṁshodhan Saṁsthā (JPSS), a non-grant Research Centre affiliated permanently to Savitribai Phule Pune University, recognised by UGC under 2(f), 12(B). JPIP focuses on six main areas of research namely : Leadership, Quality of Life, Intelligence and Giftedness, Human Diversity, Motivation and Indian Psychology.

The departments of JPIP include: Research Projects, Psychometrics, Academics, Guidance and Counseling, Potential Enhancement Services, Aptitude testing and Career Guidance, and Human Resource Development Unit.

Founder Members : Late Dr. V.V. Pendse

Late Dr. V.S. Tamhankar

Dr. Usha Khire



Identifying and Nurturing Intelligence for Social Change

JPIP Applies it's Work Through its Seven Departments



RESEARCH

- Focused Areas: Cognitive Psychology, Positive Psychology, Quality of Life, Motivation, Human Diversity, Gender Studies, Psychology of Gifted
- Ph.D. Centre under SPPU (since 1980) : 31 Ph.D. students awarded degree till now and 20+ Ph.D. ongoing
- 70+ Major and Minor projects completed in last 60 years
- Research grants/funds received from UGC, ICSSR, NCW, DST, NYC, NCERT and private organisations
- Research presentation in various National/International Conferences
- Organised National Conferences, Seminars and Research Methodology workshops
- 100+ research papers published in National and International, peer reviewed journals
- International Collaboration in past with Utrecht University (Netherlands), University of California Riverside (USA), and Keema Foundation (Australia)

(020 24207141/202) Email : research@jnanaprabodhini.org



PSYCHOMETRICS

- Developed around 175+ tests assessing human potentials for counselling, guidance, selection and research for sales and services
 - Continuous development, standardisation and revision of psychometric tests
 - Need based tool development service for different purposes
 - Tools available for sales and services: Intelligence, Emotional Intelligence, Mental Health, Aptitude, Relationship issues and Marital Satisfaction etc.
 - Contribution to educational field through consultancy for school climate assessment and enhancement
 - Regular training workshops on Orientation to Psychological Testing (OPT)
- (Ph. 020 24207140/223) Email : psychometry@jnanaprabodhini.org



ACADEMICS

- P.G. Diploma in School Psychology (since 1993) - SPPU recognised
 - P.G. Diploma in Psychology & Nurture of Giftedness (since 2014) - SPPU recognised
 - Intensive training program in Nurturing of Giftedness (since 2014) - Autonomous
 - Child & Adolescent Psychology: Enhancing Potentials (since 2006) - Autonomous
 - Quest for Happiness: Short course on REBT
 - Internship Opportunities for eligible UG and PG students
- (Ph. 020 24207225) Email : academics@jnanaprabodhini.org



GUIDANCE AND COUNSELING

- Individual/ Group testing of children and adults for various guidance needs
 - Individual counseling for all age groups (educational needs, gifted and their parents, adolescent issues, screen addiction, premarital and marital adjustment)
 - Intelligence and Personality profile for ability enhancement and guidance (Std 7th to 9th)
 - Remedial teaching assistance for Learning Disability (LD) in children
- (Ph. 020 24207145) Email : counselling@jnanaprabodhini.org
- 'Bal Samwad Katta' : Children's well-being - Free call facility (Mob. 9226074767)



POTENTIAL ENHANCEMENT SERVICES

- Caters to children, parents, teachers and facilitators for potential enhancement
 - Comprehensive child development workshops (Summer vacation & regular since 1994)
 - Facilitator's training workshops for ability enhancement of children
 - Effective parenting workshops
 - Long-term enrichment programs for identified high ability children
 - Regular enrichment programs for parents of high ability children
- (Mob. 8390998263 / 8408841728) Email : pes@jnanaprabodhini.org



APTITUDE TESTING AND CAREER GUIDANCE

- Intelligence and Aptitude measurement (iA) with guidance for vocational /career choices (Std 10th to 12th)
- Ability mapping and enhancement, guidance for school children (Std 7th to 9th)
- Online associateship available for eligible professionals across India
- Work related aptitude testing and career guidance for youth and adults
- Entrepreneur ability assessment for budding professionals
- Career Advisor Training Programs (CATP) for developing professional career counselors

(Ph. 020 24207137 / 8668933105) Email : atcg@jnanaprabodhini.org



HUMAN RESOURCE DEVELOPMENT UNIT

- Psychological assessment for selection/promotion of staff at different levels in corporate and social sector organisations
- Soft skill training/facilitation programs for organisational effectiveness
- Organisational climate surveys
- Sectors covered so far : Production, Health, Hospitality & Services, Banking, Small Businesses and Educational Institutes

(Ph. 020 24207205) Email : hrdu@jnanaprabodhini.org

ACHIEVEMENTS

- 60+ scholars affiliated to JPSS awarded Ph.D. in areas of Psychology, Education and Indian Culture
- 700+ alumni of the PG Diploma in School Psychology spread across India and overseas
- 100+ alumni of the special educational programme focusing on High Ability Students
- 150+ standardized psychometric tests developed and validated for Indian population and being used by experts
- 1,00,000+ students from class 10th to 12th benefited from Psychometric Testing and Career Guidance
- 10,000+ children participated in the continuous Child Development Programme so far
- National level Conferences on education and nurturance of High Ability Students
- Evaluation and impact studies for leading development sector organisations focusing on Psycho-social aspects of interventions
- Research projects in association with reputed national level organisations such as UGC , ICSSR ,BPR & D, Paani Foundation and Tata Trusts
- Executive Management Development Programmes for corporate and development sector (M&M, Bajaj Auto, HUL, Reckitt Benckiser & Kirloskar Cummins)

REGISTRATIONS

- Public Charitable Trust under Act 1950(29): F/2824/Pune
- Research Society under Maharashtra Society Act 1860(21) No. Maharashtra / 1953 / 85/Pune
- FCRA under Act (2010) No.0300125762021
- Donations to JPSS are exempted under section 35(1) (iii) of the Indian Income Tax Act (100% tax exemption) and under section 80(G) of the Indian Income Tax (50% tax exemption)

